

New students guide

2019

by Students of medical technology in Oulu



<https://www.facebook.com/OLTOrY/>



<https://www.instagram.com/oltokilta/>

OLTO's greeting

Hi new student!

Huge congratulations for a new place of study and excellent study choice. Welcome to our interdisciplinary group of students!

The interdisciplinarity of the field is also reflected in our subject organization: All students interested in medical technology and biomedical engineering can join Oulun lääketieteen tekniikan opiskelijat ry a.k.a OLTO (Students of medical technology in Oulu). We work as a primary subject organization for medical and wellness technology and biomedical engineering students.

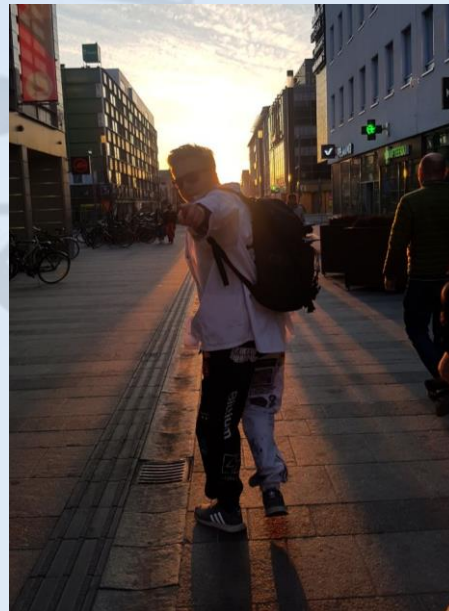
It is a good idea to join our guild at the very beginning of your studies: this will ensure your access to the events organized by the guild and access to the guild's email list. Joining is easy on our website www.olto-kilta.fi.

The website also has a lot of information about your new guild. OLTO organizes a wide range of activities and events for its members all around the year: there are leisure activities, parties, sporting events and movie nights. You can find out more about the events for example in the Events section of this opus. We will inform you about the activities and events of the guild through the guild's own e-mail list, on our website as best as we can, and on the guild's Facebook page, that you already should go and follow. Also, the informal chat of the guild in the Whatsapp app gives you

information about the events (please be in touch with the guild here).

The first event of the OLTO on autumn is preparatory of the opening ceremony of the University, Vulcanalia (see definition of vocabulary) on Wednesday, 11 September. This event is a multi-year event where you can see the students of OLTO from all possible courses of the year. In addition, OLTO will soon organize OLTO information event, especially for new students, as soon as your studies begin. There you can hear more about OLTO. In addition, a representative of the TEK (Technical Academic) organization is presenting important things related to the trade union.

Once again, congratulations and good luck with new interesting studies!



Ps, feel free to come ask anything!

Tuomas Partanen / Tumbe
Chairman of the board
Students of medical technology in Oulu

About the guild



Olto joined the event called "Kirkkovenesoudut" where the main thing is to row a boat as a team as fast as possible and have some fun.

Oulun lääketieteen tekniikan opiskelijat (students of medical technology in Oulu) ry aka OLTO is a guild established in 1993, which works to unite students of medical technology in University of Oulu and all the students interested in the field. OLTO's goal is to keep up good contacts to companies, experts and other universities and other guilds in the same field in other guilds, aka sister guilds.

There's about 250 members in the guild and they represent an exceptionally broad spectrum of students and graduates from faculties of Medicine, Natural Sciences, Technology, and Information Technology and Electrical Engineering. What they all have in common is the interest to use their

knowledge in medical technology applications and to immerse into medical technology already during their studies.

OLTO keeps up the contact to the companies, guilds and experts by attending events (e.g. Day of Medical Physics and Technology) and seminars. OLTO arranges company visits and “working life evenings”, to bring the medical technology companies closer to the students. Guild’s caucus names a teacher from University of Oulu to be an Oltermanni for the guild for a year at a time, who has shown active development and support of medical technology. The job of Oltermanni is to support the guild’s actions and be a link between the guild and staff of the university.

The activity of OLTO has developed greatly in the past few years. We meet students of medical technology from different faculties at the guild room but also in sauna and movie nights for example. Besides those OLTO has sitsit (sittning) and various other events in collaboration with other guilds. The biggest and finest event is anniversary ball which is arranged every fifth year.

OLTO is the main guild for students of wellness and medical technology and biomedical engineering. All interested students can join no matter if they are a member of another guild. Membership is free. We inform members of events and other important issues with emails, on our website and on social media as well as the guild’s info board.



Guild's board

The guild chooses its board in the caucus that is around the Christmas time. The board works for a year and some of the titles of the board can change from year to year. Some people may have multiple titles. The guild board has regular meetings and is responsible for guild's activities and organizing events.

Board of 2019 and their main jobs:

Tuomas Partanen, chairperson



Chairpersons main job is to call the board to a meeting regularly, to supervise the meetings and coordinate the board. Chairperson makes sure that the board follows the plan of action and guild's rules. Chairperson works closely with trade union TEK (Academic Engineers and Architects in Finland TEK).

Valtteri Lamberg, vice charperson, event coordinator



Vice chairperson supervises the meetings if the chairperson cannot attend for some reason.

Event coordinator has the main responsibility in organizing events and scheduling them. In cases of collaborations, they are in contact with the other organizing guild(s) and keeps the board up to date with the planning. The events are planned either together with the whole board or in event committees that can be gathered for bigger events, such as bar parties or sitsit.

Anniina Palojärvi, event coordinator



Mari Kangas, secretary



Secretary writes the minutes of each meeting, confirms them with the board and archives them. Secretary also takes care of the member register.

Riikka Lehtonen, study representative



Study representative maintains guild's exam archive and works with different units and degree program committees regarding study and degree issues and feedback from the guild members.



Samuli Iso-Möttönen, treasurer

Treasurer takes care of guild's oney transactions and keeps up with the accounting.



Timo Välkky, press officer

Press officer takes care that the members are informed with ongoings of the guild by taking care of the guild's email list: they add new members and moderates the messages. They also take care of the website: they organise, develop and update the site together with the rest of the board.



Aleksi Penttilä, PR representative

PR representative takes care of acquiring supporting members, is in contact with them and finishes the agreement and sees it being filled. It's also their responsibility to act as a link between the guild and different organisations and companies. PR representative takes care of company visits, "working life evenings" and events organised with partners.



Santeri Siira, PR representative



Ville Hassinen, member representative

Member representative takes care of member recruitment and strives to spread knowledge of OLTO within guilds and degree programs. Member rep also has the responsibility in organizing and planning excursions. They also organize a BBQ during Wappu.

The guild also has some officials whose responsibility with guild's actions is smaller.

The officials of 2019 and their main jobs:

Valtteri Lamberg, sports representative, guild room representative

The sports representative mainly organizes sport events. They also take care of guild's sport equipment and first aid kit and take care of sport day organization.

Guild room representative takes care of the general condition of the guild room and handles the issues regarding to the guild room. They make sure there's coffee and chocolate at the guild room and they inform the guild by email about issues regarding the guild room.

Janne Kilponen, preparty and gathering friend, electricity representative

Preparty and gathering friend takes care of preparties and other gatherings and guild's meetings together with event coordinators and chairperson.

Is a student of Electrical Engineering, who informs the board of issues regarding Electrical Engineering degree program.

Ville Hassinen, social political representative, MSc rep

Social political representative handles issues regarding guild's social political questions, like health, living and wellbeing and gives statements about these for the guild.

MSc rep is a student of biomedical engineering, who informs the board of issues regarding Biomedical Engineering degree program (MSc) in ITEE faculty.

Mari Kangas, member representative's travel mate

Member representative's travel mate helps the member representative with organizing the excursions.

Riikka Lehtonen, international representative

International representative takes care of issues regarding international students.

Joonas Valkama, häkkermän / hackerman, adviser

Hackerman has the main responsibility of OLTO's website and administration.

Adviser is a previous chairperson, who acts as a help and source of information for the current chairperson.

Samuli Iso-Möttönen, environmental representative

Environmental representative takes care of guild's environmental issues, such as recycling and strives to guide the board to make environmental friendly choices.

Pekka Nyrönen, alumni representative

Alumni representative takes care of guild's alumni issues, so cooperates with graduated students.

Uula Ranta, information representative

Is a student of Computer Science and Engineering, who informs the board of issues regarding Computer Science and Engineering degree program.

Janne Kykkänen, management representative

Is a student of Industrial Engineering and Management, who informs the board of issues regarding Industrial Engineering and Management degree program.

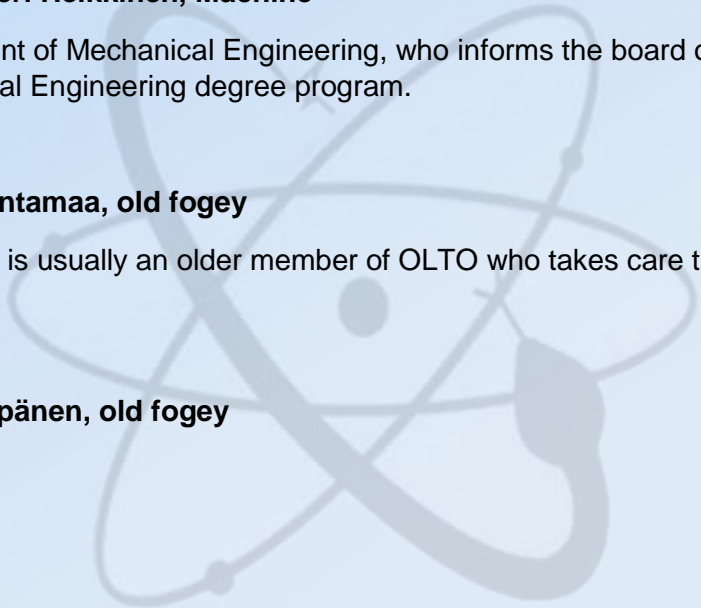
Aleksanteri Heikkinen, Machine

Is a student of Mechanical Engineering, who informs the board of issues regarding Mechanical Engineering degree program.

Linda Rantamaa, old fogey

Old fogey is usually an older member of OLTO who takes care that traditions are honored.

Visa Seppänen, old fogey



Guildroom at Linnanmaa campus

OLTO's guildroom (HK208) is located at the end of Chemistry corridor on second floor. You can usually access it easily by walking till the end of Chemistry corridor and taking a right. There's a door on the right which leads to a staircase, up the stairs and then you're there! There are signs to help to guide the way. Lately going to the guildroom has been a bit more difficult though because of renovations, but we inform about the changed routes via email regularly.

The guildroom is a part of a guildroom complex, and Atlas, Hisoni, Valenssi, ESN and Niso live there as well. We have a common kitchen, restrooms, a multipurpose room and a meeting room. You can use the rooms for studying, playing or just hanging around. There's a lot of sofas for lounging in the multipurpose room and a video projector which can be used in guild events like movie nights. In the meeting room there are tables, chairs and computers for intense studying and a Darts board. In the kitchen there is a fridge, microwave oven and OLTO's own coffee maker. Booking lists for the rooms can be found from the rooms' doors. The guild boards can book the rooms for guild's own use, for example for a meeting or a game night. It's good to check there is no booking for another guild when you are using the room.



OLTO's own room is located on the corridor of the guildroom complex (you can't be fooled by the big OLTO sign). There's a big sofa, a coat rack for clothes, shelves for mugs and other things and two tables and chairs. There's also OLTO's own microwave oven. OLTO also has a computer for its members and some old exam papers in a physical format and other helpful papers. Official exam archive is on the website <https://olto-kilta.fi/tenttiarkisto/>. The info board has the newest meeting calls and you can leave feedback for the board into the feedback post box. You can make your own coffee for free with OLTO's machine.

For more information, contact the guild room representative.

OLTO's own events

Vulcanalia preparty: This year, Wednesday 11th of September is the starting party of the school year, and OLTO has its own preparty to start things up. We'll let you know more about it right when school starts! This is the first chance for new students to meet older guild people.

OLTO-info: Info event for the new students of Biomedical Engineering and everyone who is interested in medical technology. The guild, the board, the services the guild offers and other activities will be covered. What's more, we go through the upcoming events. Older guild members are also welcome. A speaker from TEK also tells about their services.

Alumni event: In the alumni event the students and alumni, aka graduated students, meet. We will inform about this later.

Fall excursion: OLTO has a fall excursion to RekoBIONation event (a gathering to OLTO and other Bioengineering guilds). This year Reko will be organized 22-24.11 so mark this to your calendar.

OLTO's bar parties: OLTO usually organizes two bar parties a year, one in spring, one in fall, so this fall we'll have a bar party to go to.

Other preparties: OLTO has preparties to some of the biggest parties of the year, like Laskiainen (Shrovetide party, in February-March).

Sitsit: OLTO tries to arrange at least two sitsit (sittning) parties a year.

Sport days: Sportful events where we can for example snow football or go to Megazone! If you come up with something new, we will listen to new ideas!

"Board grabbing": In fall we have an event where current board members tell about their titles to new potential student who are interested in the guild activities.

Christmas party: Before Christmas we have our traditional Christmas party. All guild members get to be elves, go to sauna and have fun together! Christmas delicacies are served.

Caucus: Whole guild's meeting, where new board and officials are decided for the next year, as well as action plan, budget plan and guild's Oltermanni. Caucus will be 1.11.-15.12.

The annual meeting: Whole guild's meeting, where we go over last year's action report, financial statements and if last year's board will be discharged. The annual meeting will be 1.2.-31.3.

LFT day: Day of Medical Physics and Technology is a seminar in February, each year held somewhere around Finland. OLTO usually takes part in the seminar and it has been a blast.

Company visits: Visits to companies of the field. Company tells about their products/services and probably gives the students a tour in their offices.

"Working life evening": Event where bunch of companies from the field are invited to tell about their activities. Usually there's time for general discussion alongside coffee.

Sauna nights: Relaxed gatherings where we go to sauna together. Usually with over activities such as board games or drinking games.

Movie nights: We gather to watch a movie we voted and OLTO usually provides some snacks.

Board game nights: We play different board games and hang out. We have a bunch of different games and own games are appreciated as well.

Pimp my overalls: We gather to sew our overall patches for example before big events like Laskiainen (Shrovetide party) or Wappu (end of the year party week).

Wappu BBQ: OLTO member gather to BBQ while the freshman technology students swim in the ditch.

THERE'S AN EVENTS-PAGE ON OUR WEBSITE WHERE UPCOMING EVENTS ARE LISTED. WE USUALLY CREATE FACEBOOK EVENTS AS WELL, SO LIKE US IN FACEBOOK TO STAY UP TO DATE.

Other important events

Vulcanalia (11.9.): OYY's (student union's) start-of-the-year party for all the students of the university of Oulu and the staff. During the day there's a guild fair and in the evening there's a big party!

Guild room round: New students circle the guild rooms of the university in groups. In the guild rooms there are students to tell about their own guild and to sell overall patches. It's a good chance to buy the patches for your own overalls!

Freshman orienteering: In groups people go around a route with locations where you can get points according to your performance, outfits, team spirit, bribes (food, drinks) etc. You will get a good idea of other freshmen and city of Oulu. The competition ends to a after party. **Mallasappro:** In the middle of fall term there's an event where you drink yourself a degree. You have to drink a certain amount of drinks within a time limit. If you complete the degree you get a patch to show it. All the university participates, the bars in question are in the city centre. Process Engineering students are the organizers.

Abi days: University shows the graduating upper secondary students which study programmes are available for them. Students also tell about their own fields, so Biomedical Engineers as well.

PESTI days: Event, where representatives of companies come to the university to tell about possible career options and summer jobs they have to offer!

Speksis: Speksi is interactive student theatre with musical and dance numbers. If you shout OMSTART you can change the course of the show! There are two local speksis: TerwaSpeksi (medical students) and PahkiSpeksi. Other universities have their own, as well, like NääSpeksi (Tampere) and TeekkariSpeksi (Aalto)

Overall party: Usually in a bar, where all the students come dressed in their overalls. The parties have some sort of theme. You can buy your tickets in advance from the campus. Sometimes they can be arranged in Teekkaritalo or Walhalla.

Interdisciplinary overall party: Finanssi ry's (economy students) party which is open to all students.

Shrovetide party: Mechanical Engineering students organize a big party every Shrovetide Tuesday (the timing depends each year but usually it is around February-March). The day starts with downhill games in Raksila and ends with a party in a night club. It's one of those big parties that everybody participates in, no matter in which faculty they study.

Wappu: Student's Wappu starts long before the actual First of May celebrations. For at least a week, there are parties every day and they culminate to the Wappu Eve party. The Engineering students are well known for their Wappu Celebrations and they have tons of legendary events for Wappu.

“Dippings”: The Engineering student freshmen go dipping in Åström park, it's one of the most traditional events of Wappu.



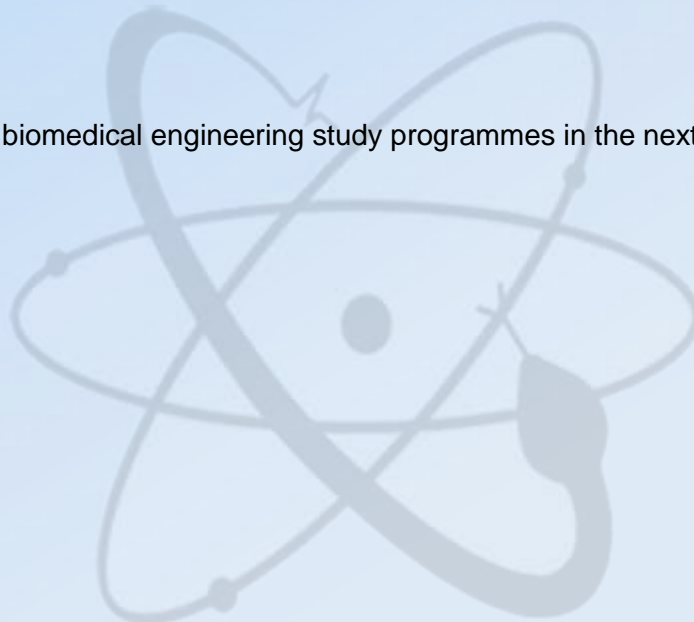
Studying Biomedical Engineering in the University of Oulu

Master's Programmes in Biomedical Engineering are offered jointly by two faculties at the University of Oulu, the Faculty of Medicine (FMED) and the Faculty of Information Technology and Electrical Engineering (ITEE). There are two programmes: national 'Lääkätieteen tekniikan maisteriohjelman' and international Master's Programme in Biomedical Engineering. The programmes lead either to the degree of Master of Health Sciences (MHSc) or to the degree of Master of Science (Technology) (MSc). One can apply to international Master's Programme with university level Bachelor's (or higher) degree in related field.

Faculty of Medicine has also Study programme of Medical and Wellness Technology, which consist of three-year Bachelor and two-year Master's degrees. Students are only accepted via transfer from another Bachelor program. Last application round for transfer was on 2019.

Students in several other Bachelor programmes can also choose Biomedical Engineering as minor subject.

There is summary of our biomedical engineering study programmes in the next page.



LÄÄKETIETEEN TEKNIKAN TAVOITETUTKINNOT / BIOMEDICAL ENGINEERING DEGREES

KANSAINVÄLINEN = INTERNATIONAL

Master of Health Sciences (MHSc)

Extent: 120 ECTS credits
 Duration: 2 years
 Language of instructions: English
 Faculty: Medicine
 Major subject: Biomedical Engineering
 Focus on biomechanics, medical imaging and health technology applications
 Specialization modules:
 - Biomechanics and Imaging
 - Health Technology

Master of Science, Technology (MSc)

Extent: 120 ECTS credits
 Duration: 2 years
 Language of instructions: English
 Faculty: Information Technology and Electrical Engineering (ITEE)
 Major subject: Biomedical Engineering
 Focus on biomedical signal and image processing, machine learning, and measurement and analysis of biomedical data
 Specialization module:
 - Signal and Image Processing

KOTIMAINEN = NATIONAL

Terveystieteiden maisteri (TtM)

Laajuus: 120 op
 Opiskeluaika: 2 vuotta
 Tiedekunta: Lääketieteellinen (LTK)
 Pääaine: Lääketieteen tekniikka
 Painopistealueina biomekaniikka, lääketieteellinen kuvantaminen, terveysteknologian sovellukset
 Syventymismoduulit:
 - Biomechanics and Imaging
 - Health Technology

Diplomi-insinööri (DI)

Laajuus: 120 op
 Opiskeluaika: 2 vuotta
 Tiedekunta: Tieto- ja sähkötekniikka (TST)
 Pääaine: Lääketieteen tekniikka
 Painopistealueina ovat biolääketieteellinen signaalin- ja kuvankäsittely, koneoppiminen sekä lääketieteellisen datan mittaaminen ja analyysi
 Syventymismoduuli:
 - Signal and Image Processing

HYVINVOINTITEKNIKAN TUTKINTO-OHJELMA

Terveystieteiden kandidaatti (TtK + TtM)

Laajuus: 180 op + 120 op
 Opiskeluaika: 3 vuotta + 2 vuotta
 Tiedekunta: Lääketieteellinen (LTK)
 Pääaine: Hyvinvointitekniikka
 Syventymiskohteet maisterivaiheessa:
 - Biolääketieteellinen teknologia
 - Lääketieteellinen kuvantaminen
 - Terveysteknologia

Information about studying in the university

You can find the updated and most recent information from <http://www oulu.fi/university/new-students> . You should read the page carefully and make sure that you have confirmed your study place and university enrolment and registration and paid the student union fee. The site has multiple useful links for more information!



Some important links:

- **Tuudo:** <https://play.google.com/store/apps/details?id=fi.caleidon.tuudo&hl=fi>
 - Tuudo is mobile app for students. Tuudo shows your study progress and has your schedule in it. Tuudo has menu for each university restaurant, timetables for busses and many more useful features. You can also see your course grades, registrations and PSP.
- **O365:** <http://o365 oulu.fi>
 - Free Microsoft Office cloud software and your student mailbox.
 - **Important:** register your account even before your studies begin!
- **WebOodi:** <https://weboodi oulu.fi> (This one either is going to be replaced or platform changes in future!)
 - You can enroll on most courses and exams on WebOodi. You can also find your progress and your personal study plan on WebOodi. The enrollment on university happens also in WebOodi along with your contact information.
- **Moodle:**
 - We will get more info about this later, but Moodle is going to replace our older systems and environments like Noppa <https://noppa oulu.fi> and Optima <https://optima oulu.fi>.
 - Some courses will still use Noppa and Optima systems in 2019-2020.
 - Noppa and Optima are used to share material for courses etc.
 - Moodle will be the primary system later.
- **Notio:** <https://notio oulu.fi>
 - Notio is an intranet of University of Oulu and it could be accessed in University's network. When using Notio outside the University's network, you need to log in using your user account of the university.

You can sign in to these apps with your PAJU-account

Check also these:

- **Oulun lääketieteen tekniikan opiskelijat ry (OLTO):** <http://olto-kilta.fi>
 - Our website (you may have come to this place through this link already!)
- **Faculty of Medicine:** <https://www oulu.fi/medicine/>
- **Faculty of Information Technology and Electrical Engineering ITEE:** <https://www oulu.fi/itee/>
- **Research Unit of Medical Imaging, Physics and Technology:** <http://www.mipt-oulu.fi/>
- **Biomedical Engineering Research Group (BME):** <https://www oulu.fi/cse/bme>
- **Oulun yliopiston ylioppilaskunta (OYY):** <http://oyy.fi>
 - Student union of the university of oulu.
 - OYY mailing lists: <http://www.oyy.fi/en/for-students/oyy-membership/information-channels/>
 - Interest societies: <https://www.oyy.fi/student-societies/harrastejarjestot/?lang=en>
 - Subject societies: <https://www.oyy.fi/student-societies/ainejarjestot/?lang=en>
- **Faculty Study Affairs:** <https://www oulu.fi/forstudents/faculty-study-affairs>
- **Student card:** <https://www.frank.fi/en/>

- Get your student id card here. With the card you can get special deals on shops and restaurants.
- There is also a mobile app to use for your student identification.
- **Other useful sites for University students:**
 - University libraries: <http://www.oulu.fi/library/>
 - Student center: <http://www.oulu.fi/university/node/34985>
 - Financial aid: <http://www.oulu.fi/university/financial-aid>
 - Restaurants: Juvenes – <http://juvenes.fi> ja Uniresta - <http://uniresta.fi>
 - Linnanmaa menus: <http://lmaa.today>
 - Lääkiks menus: <http://laakislounaat.info>
 - Healthcare: (Ylioppilaiden terveydenhoitosäätiö, YTHS): <http://www.yths.fi/en>

You should check out and follow the biomedical engineering Optima-environment infowall and its materials and links even if you are not doing any biomedical engineering courses.



How to get started

APARTMENT

As a biomedical engineering student you can rejoice, because you can live in pretty much any part of Oulu. That is because often you need to travel between campuses even during your day. However many live right next to one of the campuses: either near Linnanmaa or Kontinkangas/downtown. Possible providers of cheap apartments are e.g. PSOAS, Sivakka, OsNa and SATO to name a few. Apartments are also provided by private sector. You should search for an apartment as soon as you are chosen because during July and August, the competition for student apartments is high.

FURNITURE AND APPLIANCES

Most of the local stores that sell furniture and appliances are located at Ritaharju, Kaakkuri, Limingantulli or Taka-Lyötty. These stores include (but are not limited to) Jysk, Gigantti, Asko, Isku, Sotka, Musta Pörssi, Vepsäläinen, Verkkokauppa etc. The closest IKEA is located at Haaparannalla, which is approximately 130 km North of Oulu.

If you are interested in cheap second hand furniture, there are a few popular options you can choose from. These include Järkikirppis (Raksila), Salvation Army store (Limingantulli) and Tori.fi (online service for buying and selling).

COMMUTING

Best way to travel in Oulu is with a bicycle. There are plenty of good roads for cyclists. If you are looking for a bike, there are plenty of bike shops in Oulu. E.g. Pyörä-Suvala, Jussin Pyöräpiste, Intersport etc. Second hand stores might also have some bikes for sale! It is also very important to get a lock for your bike since Oulu is also a very popular place for bike thieves. These locks can be found in almost any convenience and hardware stores though it is preferable to purchase your lock from a hardware store or a bike shop.

Oulu also has a public transport system called Waltti. Different travel zones have different prices, but most commonly a student only needs the A-zone card which covers most of Oulu city area (most notably downtown, Linnanmaa and Kontinkangas). You can either purchase a one-way ticket (from the bus with cash!) or a card that can be loaded with one-way tickets or a monthly pass. 30-day pass is 42€ for a student (+ the card itself if you don't already have one, but this is usually a few more euros). One-way tickets are 3,30€ for A-zone, but only 2,05€ if value is loaded onto the card. More information can be found here:

<http://waltti.fi/info-faq/?lang=en>

You can check the bus routes and lines from Google Maps, Nysse mobile application or from <http://jl.ouluunliikenne.fi>. With the latter ones, you can follow the busses in real time. Only some of the bus stops have this same possibility but all of them do contain timetables.

FOOD

There are some restaurants that serve meals for students with the very low price of 2,60€. These restaurants are most of the ones found in University (either campus). Also Vanilla and ODL have food for offer at this price downtown. More information about the food can be found online or at the restaurants. It should be noted that the student prices are only applied if a valid student card is presented.

Oulu is best known for its pizza and döner kebab but there are a lot of other good restaurants. Go out and see for yourself!

PARKING

Both Linnanmaa and Kontinkangas have parking spaces for students but it should be noted that there isn't a plethora of them and most of the spaces are taken before 9 o'clock. Also take extra caution to not park anywhere other than designated parking areas. It is very easy to get a ticket for bad parking or having the parking time be overdue. Leaving early and being cautious is key for having a good experience with parking.

FSHS (YTHS in Finnish)

FSHS, Finnish Student Health Service (Ylioppilaiden terveydenhoitosäätiö), is an expert in student healthcare and provides targeted low-threshold services designed to provide long-term health benefits for university students. The services offered for general health, oral health and mental health, as well as our work to promote health and community health, aim to maintain and improve students' well-being and ability to study. The service works with a callback service in which you can talk with the nurse and possibly order an appointment. During the mornings, you can go to the FSHS center between 8 and 9 am. FSHS center is located at Linnanmaa, Yliopistokatu 1 A. All information can be found at: <http://www.yths.fi/en/>

KELA

Kela is the social Insurance Institution of Finland that provides social security coverage for Finnish residents and many Finns living abroad through the different stages of their lives. Therefore Kela can grant financial aid to students who study on a full-time basis and are **Finnish citizens**. However there are some exceptions and you should find out from Kela itself if you are eligible for any compensation or financial support. The financial aid for students includes study grant, government guarantee for student loans and housing supplement. Students who rent a home in Finland may be entitled to general housing allowance. Other benefits for students provided by Kela are, for example, the school transport subsidy, the student loan compensation and subsidised meals. If you are eligible

for any of Kela's services, visit <http://www.kela.fi/web/en/financial-aid-for-students-eligibility> for more information and leave an application.



New Student Dictionary

A

Academic quarter (= Akateeminen vartti)

Unless otherwise specified, lectures or lessons start 15 minutes after defined start time, For example: Lecture is defined to start at 10:00 but actual starting time is at 10:15. Apart from this, at Kontinkangas lectures may start on the hour. Poikkeuksena lääkis, jossa iltapäivän luennot alkavat tasalta. Starting times may also vary inside the course. Always check exam starting times, because they often start on the hour.

Afterparty (= Jatkot)

A party that is held after another event.

Alum (= Alumni)

All University graduates with a Bachelor's, Master's or a Doctoral Degree are alumni.

Anniversary-Sittning (= Vuosijuhlasitit)

Like normal sittning but much more ceremonial/formal but not as Anniversary celebration. Check "sittning".

Anniversary celebration (= Vuosijuhlat)

Even more ceremonial or formal than Anniversary-Sittning. Check "sittning".

Assistant (= Assari)

Someone who assists you at exercises. They may work alongside their studies or may be already graduated. Their job is to help you, so ask them if you don't have enough knowledge to complete the task.

B

Bachelor (= Kandidaatti / Kandi)

Person who has completed the Bachelor of Science. In Finnish word "kandi" may point to Bachelor's thesis work.

Badges (= Haalarimerkki)

Many students sew strange and humorous badges on top of their overalls, which you can get by taking part of different kinds of happenings and events or you can buy them from other guilds, organizations and different societies. It is also common to trade badges with other students.

Board (= Hallitus)

Board is guild's executive. Board with its officials are responsible for example event organizing. Every member of the guild is allowed to stand for election. Representatives are selected in caucus (with election) which is a meeting of members.

Boomerang (= Bumerangi)

Rebounded exercise or work report, which has some corrections to be done or something else to notify.

BME

Biomedical Engineering Research Group

- Biosignal Processing Team: biosignal processing applications concerning cardiovascular system and central nervous system.
- Biomechanics Research Team: measurement and biosignal processing applications concerning musculoskeletal system.

C

Café & Juicebar

Smoothie bar located at Linnanmaa campus.

Café Hub

Café which is located near green racks and Restaurant Napa.

D

Dean (= Dekani)

The big boss or leader of faculty. Every faculty has their own dean.

E

Exam (= Tentti)

Usually an ordeal moment before course ends or sometimes even at the beginning of the course! Here you show what you learned (or usually didn't).

Excursion (= Excursio)

Long or short journey or trip, for example company visit or similar. OLTO's annual excursion to the traditional LFTY days (Finnish Society for Medical Physics and Medical Engineering) will take place in February. In the autumn OLTO is heading to Otaniemi to RekomBIOnaatio happening.

F

Finanssi

Finanssi, the Association of Oulu Business School Students, is the very own student guild for all business students in the University of Oulu. They are known for **Interdisciplinary Overall Parties**.

Foobar

Restaurant at R-door lobby located at Linnanmaa campus.

Foodoo

Restaurant located at Linnanmaa campus.

Freshman (= Fuksi)

A freshman is a person in the first year at an educational institution.

G

Guild (= Kilta)

Subject society. Almost every field of study has their own guild/subject society. They organize happenings and work as a connection between degree programme and students.

H

Humanist (Humanisti)

Student at the Faculty of Humanities.

I

J

Juvenes

The second one of our two caterings. It owns all restaurants at Linnanmaa campus except Kastari.

Jäynä (= Prank)

Prank or jäynä is part of Teekkari (tech student) culture. Jäynä is like clever practical jokes done to amuse even a bigger audience. The idea is not to hurt anyone's feelings or harm anything rather to bring some joy to people's life.

K

Kaarle(nholvi)

Popular bar to party. The sweatiest dance floor and legendary windowsill are here!

Kastari

Uniresta's restaurant located at administration building.

Guild room (= kiltahuone/kiltis)

Guilds may have their own rooms where members can spend their free time or assemble to make exercises etc. OLTO's guild room is located at room HK208. You make coffee for free here!

Kontinkangas

Place where Faculty of Medicine is located (Department of Medical Technology also!)

Kotka

Restaurant located at OYS (Oulu University Hospital).

Hangover (= Krapula)

You probably know this (after parties at morning) if you have been partying hard sometime.

Kyhi / Kiltayhdyshenkilö

Link between guilds/students and Academic Engineers and Architects in Finland TEK . Check "TEK."

Kylteri

Economic student.

Kylmä

Restaurant located at Linnanmaa campus.

L

Laskuharjoitus (laskarit)

Exercises during courses where you learn practically. Usually assistants help you.

LFT-day (LFT-päivä)

The annual Finnish Society for Medical Physics and Medical Engineering day (LFT-Day).

Linnanmaa

Main Campus of University of Oulu.

LTK

Faculty of Medicine.

Lecture/Class/Lesson (= Luento)

The original way of teaching, where lecturer talks and students listen, write notes, check menu of the day, reply emails and WhatsApp/Telegram/IRC messages and try not to fall asleep.

M

Mandatory attendance (= Läsnäolopakko)

Some courses include mandatory attendance, some not. It depends on style of course. Riippuu kurssin luonteesta ja kurssin pitäjältä. It is desirable to join lectures and exercises because it usually makes passing exams easier.

Mara

Restaurant at Linnanmaa campus near the library (Pegasus).

Medisiina

Uniresta's restaurant located at Kontinkangas campus.

MIPT

Research unit of Medical Imaging, Physics and Technology.

N

Napa

Restaurant located at Linnanmaa campus (main lobby).

Noppa

1. Some courses use this website. You can see timetables, lecture and exercise materials usually here. 2. It also may mean ECTS (European Credit Transfer and Accumulation System).

Notice boards

Notice boards are full of important information and they are everywhere. OLTO's notice board is located at Kontingkangas campus 5A lobby. Nowadays the most important "board" is our email list.

O

Official (= Toimihenkilö or toimari)

Official and helping hand for the board of the Guild.

Overalls

The student overalls is the best and easiest choice of party clothes. Students in different fields and student organizations can be separated by looking overall's colors and logos. Other organizations may get their overalls already in autumn and others as late as spring before Wappu. OLTO doesn't have its own specified overalls but freshmen of medical and wellness technology and BME students order overalls together with medical students. They look similar, but logos are different.

OHLK

Oulun hammaslääketieteen kilta ry. Dentistry Guild in Oulu.

OKKL

Oulun korkeakoululiikunta. University Sports of Oulu. Offer academic sport services and other welfare services for students and staff of Oulu University of Applied Sciences, University of Oulu, Diaconia University of Applied Sciences -Oulu Unit, Oulu Vocational College and The staff of Joint Authority for Education Services (KYP).

OKM

Opetus- ja kulttuuriministeriö. Ministry of Education and Culture. The Ministry of Education and Culture is one of the twelve ministries that together with the ministers heading them form the Finnish Government.

OLK

Oulun lääketieteellinen kilta ry. Medical Guild in Oulu.

OLTO

Oulun lääketieteen tekniikan opiskelijat ry. Medical Technology students of Oulu. This dictionary was written by some member of OLTO. OLTO is an association for all the students of University of Oulu interested in Medical Technology / Biomedical engineering.

OLuT

Oulun Luonnontieteilijät ry. Association for natural scientist in Oulu.

Omaope

Your tutor teacher.

OPH

Opetushallitus. Finnish National Agency for Education (EDUFI) is a national development agency.

Optima

Optima is an online learning environment. Some courses use this website. You can find timetables, lecture and exercise materials here.

Oranssit naulakot

Or in english orange racks, oranges. You can see racks that are orange at Linnanmaa campus. One of the popular meeting places. Just say "oranssit" to your friend and you can meet there.

OTY

Oulun Teekkariyhdistys. The purpose of the association is to cherish the Teekkari culture in Oulu, advance its members social and spiritual endeavors, act as a link between the engineering students of University of Oulu and guilds, and observe and develop guidelines to their action.

OY (Oulun Yliopisto)

University of Oulu.

OYY

The Student Union of the University of Oulu, known as OYY among friends, is the student advocacy organisation at the University of Oulu.

P

Pegasus

Oulu University Library. There is also some rooms for groups. Great place to study.

Preparty

A party held before the start of main event.

PJ

Puheenjohtaja. Chairman. Chairwoman. Chairperson. Guild's chair* is visible and audible person. You can always ask from this person about guild and guild's action.

Pohjat

Normally alcohol which is drunked before main parties.

PSOAS

Pohjois-Suomen opiskelija-asuntosäätiö. Student Housing Foundation of Northern Finland. Offers some places to live for students.

Pruju

Lecture or exercise material. It usually includes all the stuff that is going to be taught during the course. Nowadays it is common that pruju is a downloadable version.

PRO (= Pienryhmänohjaaja)

Student tutor. Your nearest help with questions according to student life or something else.

R

Rotuaari

The Rotuaari is a pedestrian zone in the city centre of Oulu. Nice cafes, restaurants and places to meet.

S

Shrovetide (= Laskiainen)

Party in winter time and organized by The Guild of Mechanical Engineers. The day starts with snow sliding in Raksila and ends with big party in the evening.

Student card (= Opiskelijakortti)

The student card is your means to prove that you're a student in Finland in all situations necessary.

Student union (= Ylioppilaskunta)

A link between the students of the university. Every student aiming at a bachelor's or master's degree at the University of Oulu is a member of the Student Union.

Sittning (= Sitsit)

"Sitsit" is an academic party that includes a three-course meal accompanied by a lot of singing and toasting. There is often a theme and you always have to follow the sitsit etiquette (otherwise you might be punished).

Speksi

Speksi is a form of interactive musical theatre where the viewers get to influence what happens on stage. Some Speksis from Oulu are: TerwaSpeksi and PahkiSpeksi, others for example: NääSpeksi (Tampere) ja TeekkariSpeksi (Aalto).

Sport pass (= Sporttipassi)

The Sports Pass functions as an entrance ticket to all the services and training sessions. Check "OKKL."

T

Teekkari

A tech student.

Teekkaritalo

Party house where students usually party and go to sauna. Teekkaritalo is located at Kaijonharju Kalervontie 7. It is part of Oulu's teekkari culture. There are also many other events!

TEK

A trade union. Academic Engineers and Architects in Finland TEK is one of the unions for highly educated professionals. You probably hear a lot about this during your studies.

TellUs

Place to study alone or in a group.

TellUs cafe

A Cafe in TellUs.

TST

Tieto- ja sähkötekniikan tiedekunta (TST). Faculty of Information Technology and Electrical Engineering ITEE.

Tuudo

Tuudo is a mobile app, made for you, to make your student life simpler. With Tuudo, you manage your studies and ease your daily life both, on and off the campus. Use this app!

U

Uniresta

The second one of our two caterings.

Uusinta

"Repeat exam". More or less unsuccessful exam can be made again in this event.

V

Vanilla

Uniresta's restaurant in Virastotalo near the city centre.

Vihreät naulakot

Green racks, greens, vihreät. One of the popular meeting places beside orange ones at Linnanmaa campus.

Vulcanalia

Celebrating the beginning of a new academic year.

Vulcanalia is the University of Oulu's annual kick-off event organized by the Student Union.

W

Walhalla

Medical Guild's Guild house.

Wappu

Ending the academic year is a spectacular many days event Wappu, what every student is waiting for all year round. A lot of parties and nice people all around the city. And drink of course!

Weboodi

Weboodi system is a student information system that supports studies and teaching. You find timetables here but also completed studies and course registrations.

Wesibussi

Wesibussi is a way to collect charity organized by engineering students of University of Oulu together with OTPTravel Oy. Usually driver during Wappu and Vulcanalia event. Its idea is to move from one place to another without stopping the party. Don't miss this one!

Wiki

Another website where you can see timetables, course material etc.

Y

YKHS

Ystävällinen KaunoHiihtoSeura. Organizes some downhill skiing trips.

YTHS

Ylioppilaiden terveydenhoitosäätiö. Finnish Student Health Services.

Ö

Ö-öpinen

Oululainen, arkkarien toimittama Wappulehti. Architecture student Guild's Wappumagazine. This is published only in Finnish.

